

---

# WBFSH

---

WORLD BREEDING FEDERATION  
FOR SPORT HORSES



## State of the Industry 2<sup>nd</sup> Edition

Renai Hart  
Katy Holder-Vale  
Kaasandra Chee



## OBJECTIVES

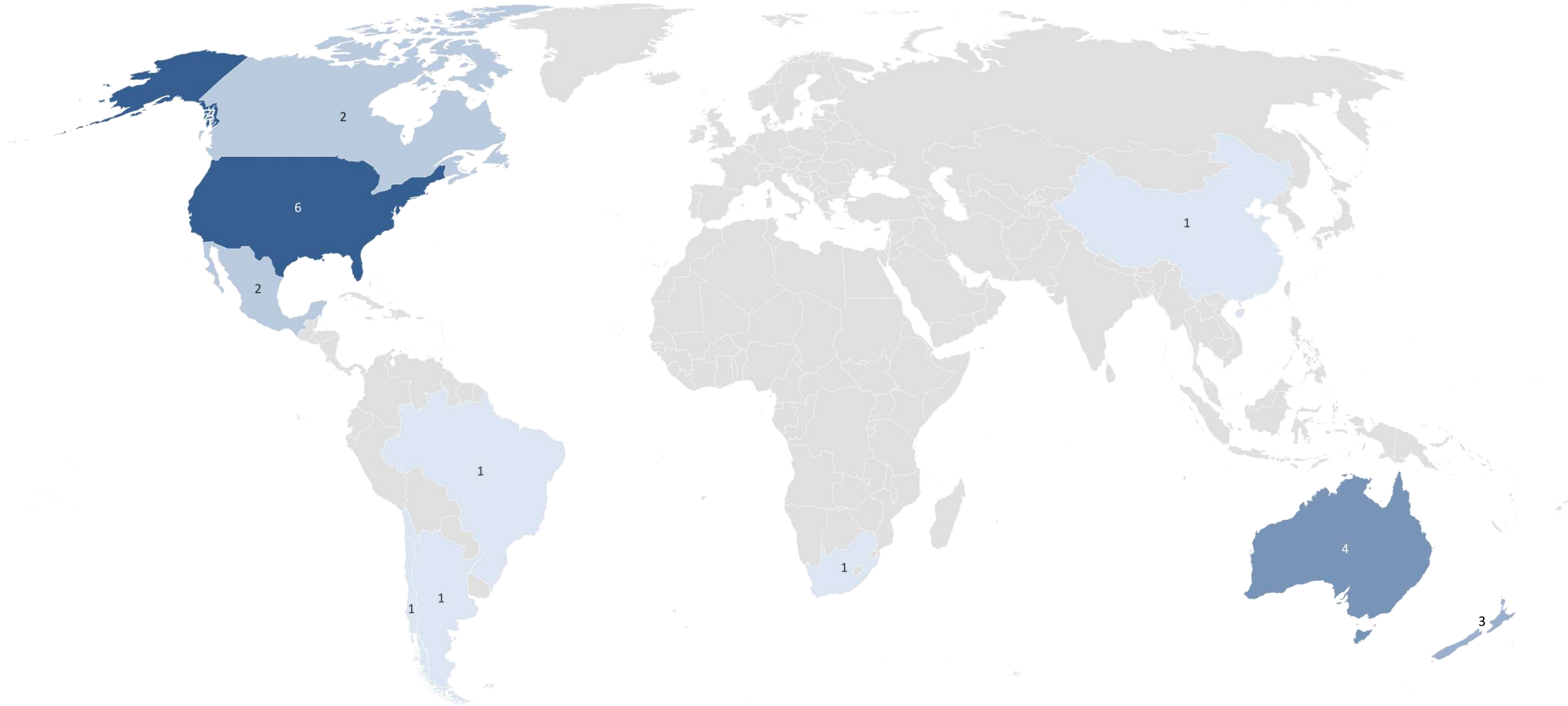


- Create constructive and productive engagement between WBFSH, Studbooks, Breeders, FEI, National Federations
- Provide the current State of the Industry
- Identify emerging challenges – welfare and social licences to operate
- Provide relevant information to further develop the industry

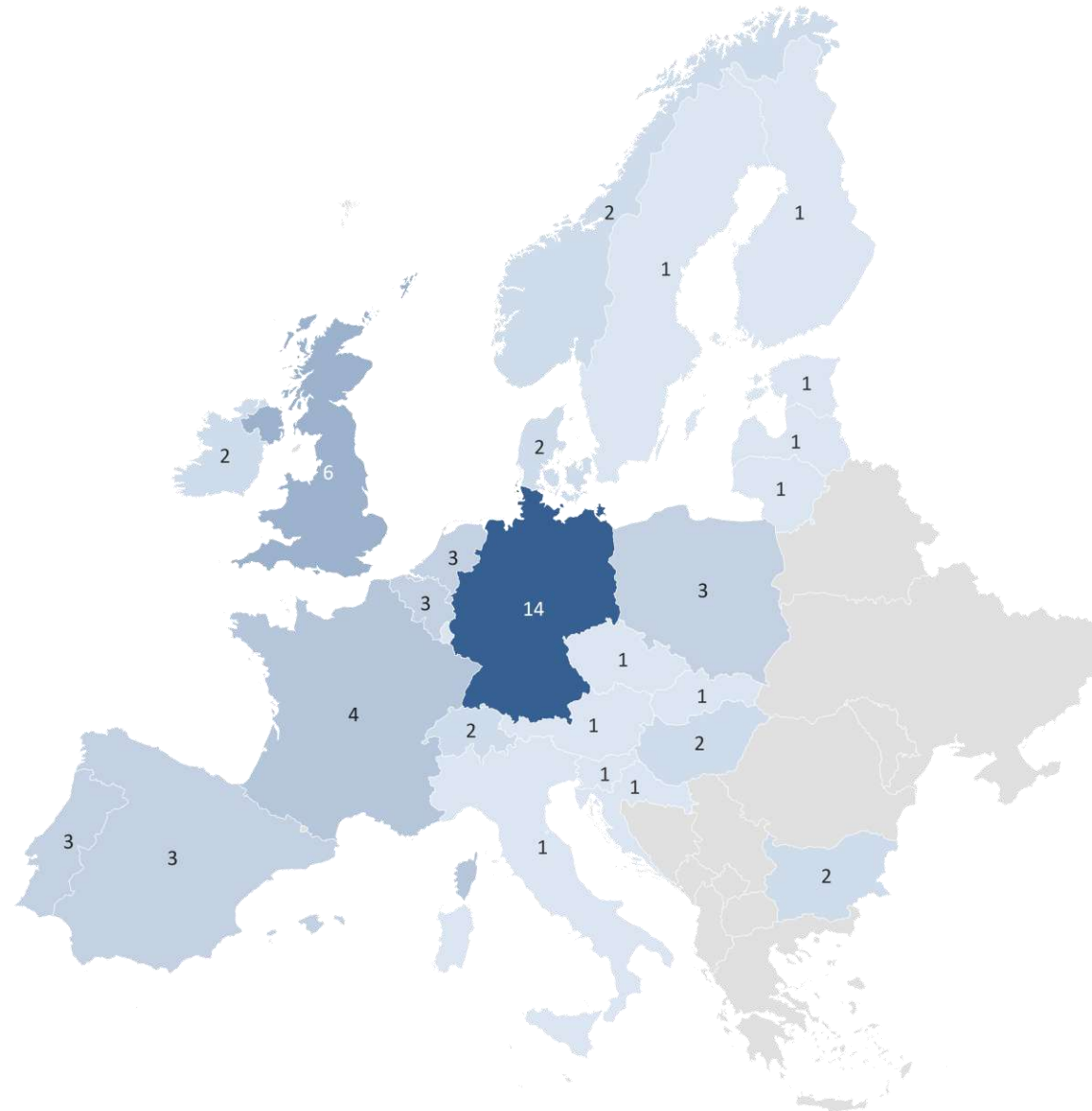
# WBFSH MEMBERS - NON-EUROPEAN COUNTRIES 2022



**WBFSH**  
WORLD BREEDING FEDERATION  
FOR SPORT HORSES



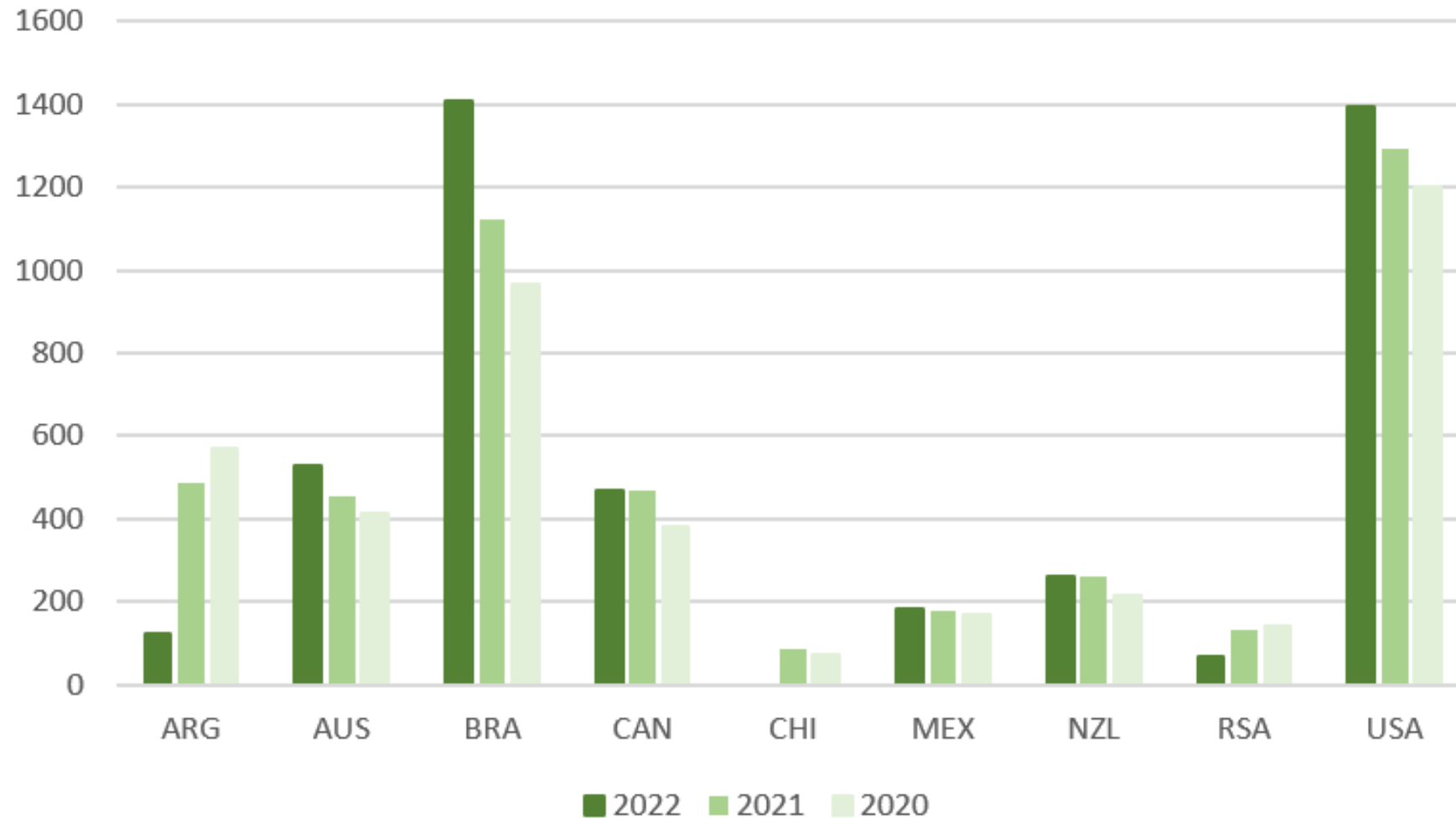
# WBFSH MEMBERS - EUROPEAN COUNTRIES 2022



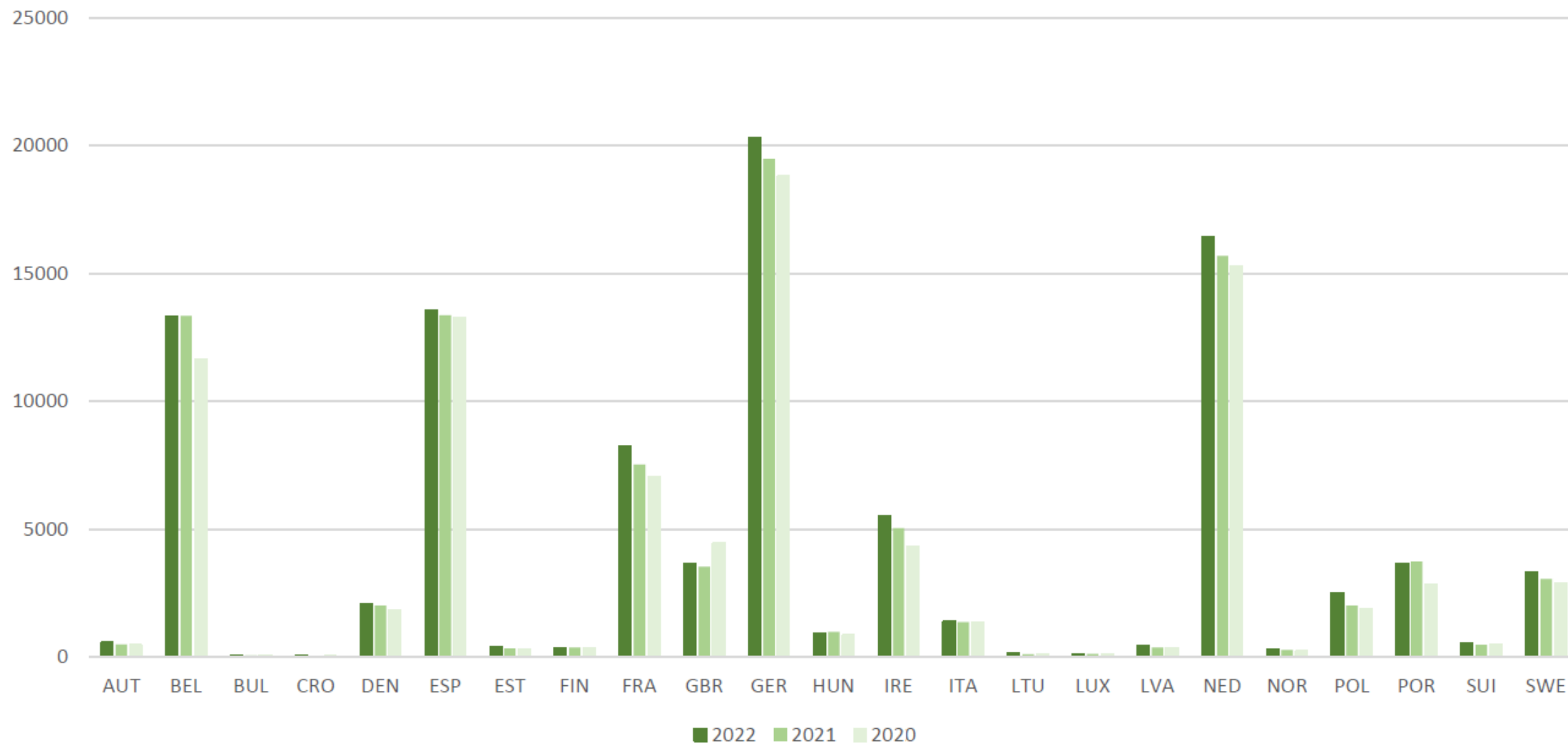
## NUMBER OF FOALS NON-EUROPEAN COUNTRY 2020-2022



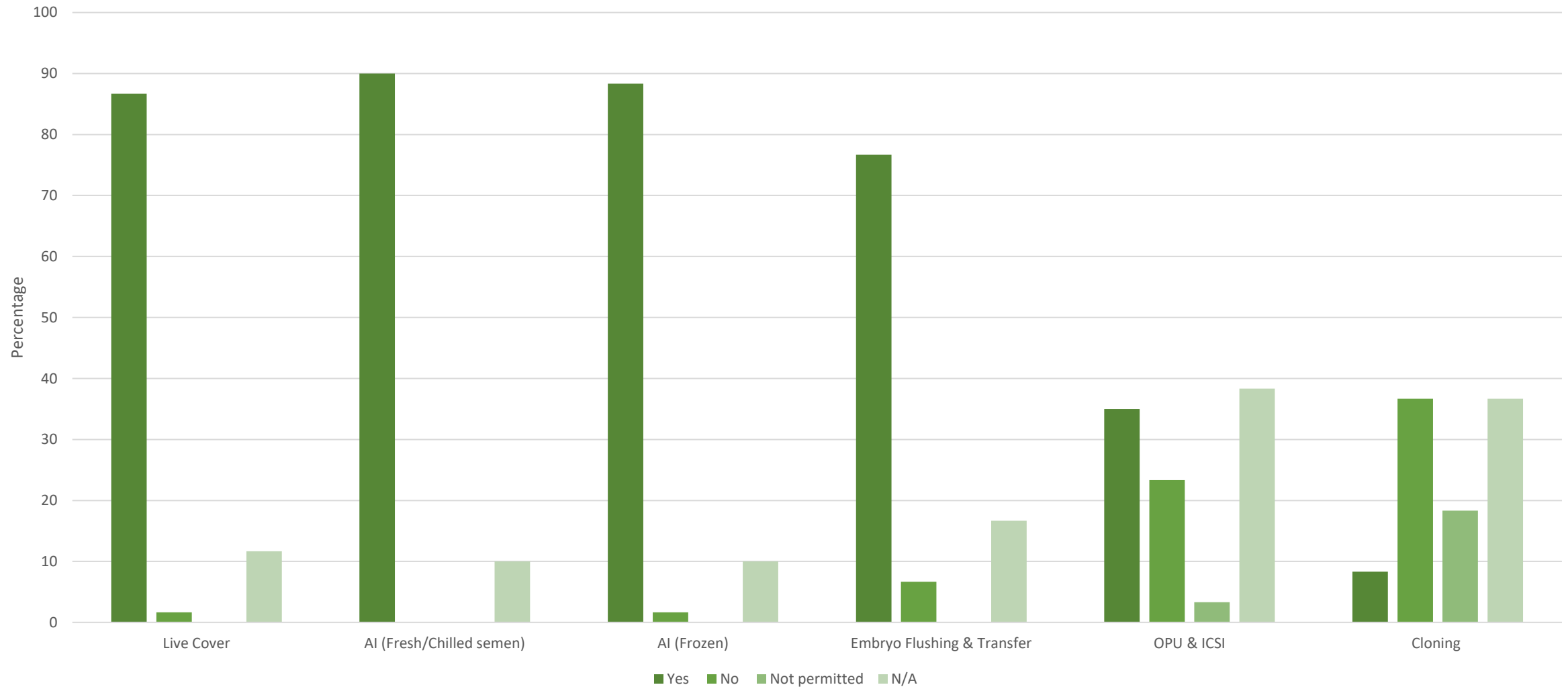
**WBFSH**  
WORLD BREEDING FEDERATION  
FOR SPORT HORSES



# NUMBER OF FOALS EUROPEAN COUNTRY 2020-2022



# EUROPEAN BREEDING TECHNIQUES 2022





## STATE OF THE INDUSTRY – 2<sup>ND</sup> EDITION

- Highlights the snapshot of our industry today
- If every studbook returns accurate and complete data for the annual report then even more value, through improved interpretation, can be given to the State of the Industry reports
- Additional valuable data collection comes from other entities such as breeders and national federations





# HORSE HEALTH



- Horse health is a welfare issue
- Healthy horses leads to longevity of both horses and sport
- Promotion and practice of good life for horses



# HORSE HEALTH - SHIVERS



- Specific pelvic limb moving pattern
- Selective distal atonal degeneration in the cerebella  
Purkinje cells within the deep cerebella nuclei
- Evidence for and against a genetic predisposition for Shivers
- No proven effective treatment

# HORSE HEALTH – FRAGILE FOAL SYNDROME



- Inherited defect of connective tissue
- Monogenetic defect (PLOD1 gene)
- Single copy of the mutation do not show clinical signs
- Positive effect of FFS carriers of movement-related traits
- Untreatable

# HORSE HEALTH – TYPE 1 POLYSACCHARIDE STORAGE MYOPATHY



- Autosomal dominant genetic mutation in GYS1
- Presents in continental Belgian breed crosses including Warmbloods
- Abnormal accumulation of the normal form of sugar stored in the muscle
- Untreatable but managed through diet and exercise

# HORSE HEALTH – TYPE 2 POLYSACCHARIDE STORAGE MYOPATHY



- Specific cause of PSSM2 has not been identified
- PSSM2-ER and PSSM2-MFM
- Reluctance to go forward under saddle and engage and display exercise intolerance
- No genetic test available
- Increased amino acid and fat intake and exercise regimes show some positive results

## STATE OF THE INDUSTRY – 2<sup>ND</sup> EDITION



- Using peer-reviewed scientific research allows WBFSH members to continue to breed and produce healthy horses
- Through education and information we can improve our overall horsemanship, for the long term well-being of the horse





## ANIMAL WELFARE



- Understanding needs of members and public expectations, obligations of Studbooks and Federations, legislation and codes of practice around animal welfare
- Creating a snapshot of global perception of animal welfare
- More transparency to appeal to a more welfare conscious industry



## ANIMAL WELFARE - SPOTLIGHT ON WEANING



- Scientific basis to alleviating “weaning stress”
- Study of feral and semi-natural herds
- Decreasing maternal deprivation, social isolation, abrupt environmental and nutritional changes
- Decreasing stress hormones and long-term adverse behaviours
- Prof. Natalie Waran’s weaning webinar on WBFSH YouTube channel

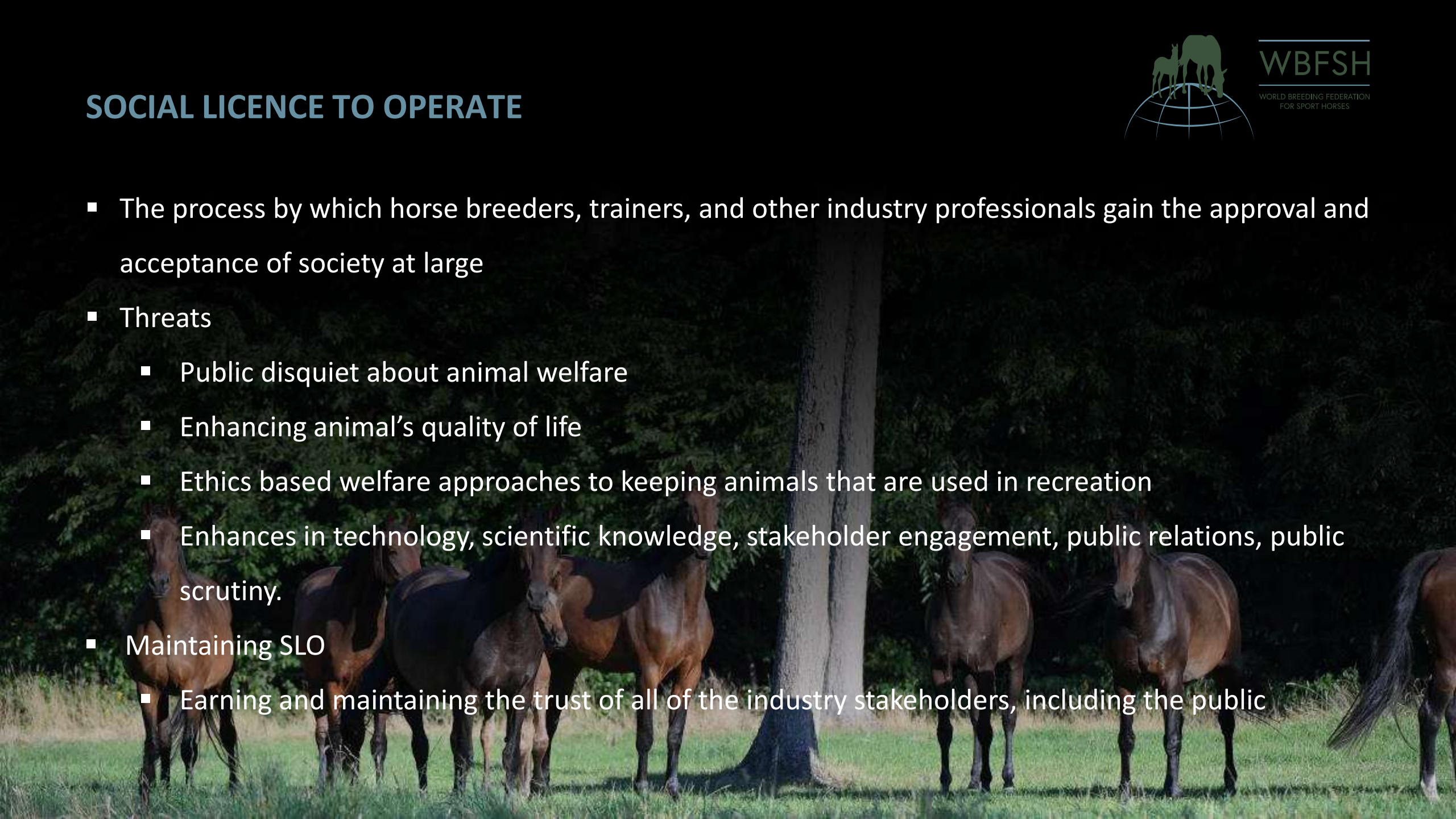
*Image courtesy of Thomas Bach Jensen*



# SOCIAL LICENCE TO OPERATE



- The process by which horse breeders, trainers, and other industry professionals gain the approval and acceptance of society at large
- Threats
  - Public disquiet about animal welfare
  - Enhancing animal's quality of life
  - Ethics based welfare approaches to keeping animals that are used in recreation
  - Enhances in technology, scientific knowledge, stakeholder engagement, public relations, public scrutiny.
- Maintaining SLO
  - Earning and maintaining the trust of all of the industry stakeholders, including the public



## STATE OF THE INDUSTRY – 2<sup>ND</sup> EDITION

- Want to create a world environment for the good life of the horse
- Create sustainability for our industry through good leadership and positive practices
- Be able to have open and honest discussions to allow our industry to survive and evolve





# STATE OF THE INDUSTRY – 2<sup>ND</sup> EDITION



WBFSH  
WORLD BREEDING FEDERATION  
FOR SPORT HORSES



*Image courtesy of Dirk Caremans*